



**blue knot**  
**foundation**

National Centre of Excellence  
for Complex Trauma



# Trauma-Informed Supervision

Blue Knot Foundation understands the challenges of working with clients who have experienced trauma. Our trauma-informed supervision service matches the needs of practitioners and organisations with the knowledge, skills, approach and location of supervisors.

## WHY USE BLUE KNOT FOUNDATION'S TRAUMA-INFORMED SUPERVISION SERVICE?

Blue Knot Foundation is a national leader in complex trauma, trauma-informed practice and vicarious trauma. We provide quality trauma-informed supervision. We also have an extensive database of trauma-informed supervisors.

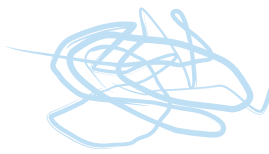
## WHO WOULD BENEFIT?

1. Clinicians working with adult survivors of complex trauma
2. Interdisciplinary teams working clinically with adult survivors of complex trauma
3. Legal teams working with clients with past and/or present traumas, abuses and/or crimes
4. Workers supporting clients with past and/or present traumas
5. Practitioners and teams from legal, health, mental health and human service sectors



## WANT TO KNOW MORE?

Email: [training@blueknot.org.au](mailto:training@blueknot.org.au) | Phone: (02) 8920 3611 | Web: [www.blueknot.org.au](http://www.blueknot.org.au)



# blue knot foundation

National Centre of Excellence  
for Complex Trauma

## Trauma-Informed Consultancy

Blue Knot Foundation understands the challenges of trauma-informed organisational change. Our consultancy service supports organisations to design and implement an achievable change process which meets current and future needs. Trauma-informed organisational change benefits staff, clients and organisations alike.

### WHO WOULD BENEFIT?

1. Organisations seeking to be more trauma-informed
2. Organisations wishing to implement trauma-informed change
3. Organisations needing a trauma-informed review of tools, policy, procedures, practice and programs

### WHAT DO WE PROVIDE?

- An interactive change process that is evidence-based, solution-focused, collaborative and attuned to your needs
- Fit-for-purpose tools and resources
- A skilled trauma-informed consultant
- Ongoing support from Blue Knot Foundation

### WHY USE BLUE KNOT FOUNDATION'S TRAUMA-INFORMED CONSULTANCY SERVICE?

Blue Knot Foundation:

- Is a national leader in complex trauma, trauma-informed practice and vicarious trauma
- Has a track record of supporting many organisations to become trauma-informed
- Utilises collaborative, efficient and effective organisational change processes
- Has expert consultants available



### WANT TO KNOW MORE?

Email: [training@blueknot.org.au](mailto:training@blueknot.org.au) | Phone: (02) 8920 3611 | Web: [www.blueknot.org.au](http://www.blueknot.org.au)



National Centre of Excellence  
for Complex Trauma

In 2018, over 97%  
of our attendees said  
they would recommend  
the training to others.

All training packages  
can be tailored to suit  
your specific needs.

# Professional Development Training and Services

Blue Knot Foundation, National Centre of Excellence for Complex Trauma, has expertise in the clinical treatment of complex trauma, trauma-informed practice and vicarious trauma.

Blue Knot Foundation delivers professional development training to practitioners, staff and managers in diverse roles and sectors, and educational workshops for survivors and family members in addition to supervision and consultancy.

All Blue Knot Foundation training sessions are interactive and evidence-based. Our trainings are facilitated by skilled and experienced trainers, delivered across Australia and follow adult learning principles.

Please visit [www.blueknot.org.au/training](http://www.blueknot.org.au/training) to see our scheduled training. We can also come to you to deliver in-house training.

## TRAUMA-INFORMED CARE AND PRACTICE

- Trauma-Informed Care and Practice - Foundation
- Trauma-Informed Care and Practice - Advanced
- Domestic and Family Violence - Foundation
- Domestic and Family Violence - Advanced
- Disability
- Legal and Justice Sector
- Homelessness
- Educational Settings
- Institutional Settings
- Managers
- Trauma-Informed Redress: Direct Personal Response
- Working with Aboriginal and Torres Strait Islander Peoples
- Primary Care Practitioners
- Trauma-Informed Clinical Supervision Seminar

## MANAGING VICARIOUS TRAUMA

- Foundation - for all workers exposed to trauma stories
- For Legal and Justice Sector
- Working with Aboriginal and Torres Strait Islander Peoples

## THREE-PHASED APPROACH

- Introduction to Working Therapeutically with Complex Trauma Clients (Level 1)
- Working Therapeutically Complex Trauma Clients (Level 2)

## MASTERCLASSES

- Working with Psychosis and Trauma
  - Trauma-Informed Transgender and Gender Diverse Affirmative Care
- Others on request

## EDUCATIONAL WORKSHOPS

- For adult survivors of childhood trauma and abuse
- For family, friends and loved ones of adult survivors

## OTHER SERVICES

- Supervision/Case Consultation/Debriefing
- Trauma-Informed Consultancy
- Workshop facilitation
- Speaking engagements



## WANT TO KNOW MORE?

Email: [training@blueknot.org.au](mailto:training@blueknot.org.au) | Phone: (02) 8920 3611 | Web: [www.blueknot.org.au](http://www.blueknot.org.au)